

Site Area = 2867 m2

Revision	Date	Description	Drawn/Chkd.
ARCHITECTS LAYOUTS			

PinnacleESP
consulting engineers
Croydon Office:
No 1 Croydon, 1st Floor, 12-16 Addiscombe, Croydon, CR0 0XT
London Office:
Cargo Works, 1-2 Hatfields, London, SE1 9PG
Tel: 020 8776 5500 | Fax: 020 8776 5533
Email: info@pinnacle-esp.co.uk | Web: www.pinnacle-esp.co.uk

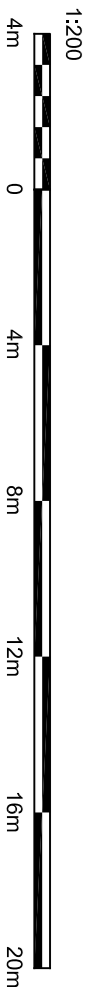
Project:
CITY ACADEMY LANGLEY WALK

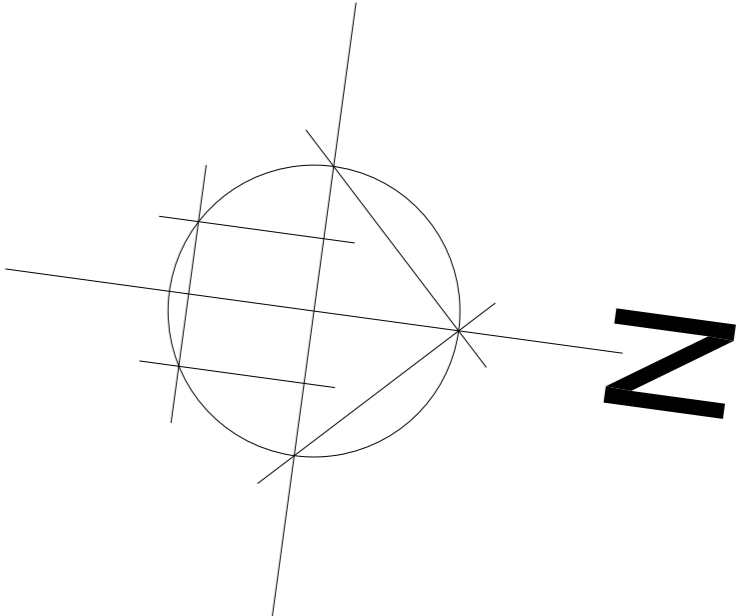
Client:
CITY ACADEMY

Title:
PROPOSED BLOCK PLAN

Drawn: LAK
Date: Sept 2023
Scale: 1:200 @A1
Dwg No. P4576 PESEP SP P 002

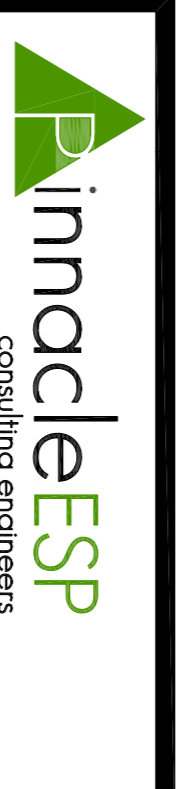
Revision: 0





	SPORTS HALL	692 m2
	CHANGING / COMMON AREAS	175 m2
	HEALTH & FITNESS	110 m2
	STORAGE / PLANT	126 m2
	CIRCULATION	137 m2
TOTAL FLOOR AREA:		1240 m2

Revision	Date	Description	Drawn/Checked
ARCHITECTS LAYOUTS			



Croydon Office:
consulting engineers
No.1 Croydon, 1st Floor, 12-16 Addiscombe, Croydon,
CR0 0XT
London Office:
Cargo Works, 1-2 Hatfields, London,
SE1 9PG
Tel: 020 8776 5500 | **Fax:** 020 8776 5533
Email: info@pinnacle-esp.co.uk | **Web:** www.pinnacle-esp.co.uk

Project:
CITY ACADEMY LANGLEY WALK

Client:
CITY ACADEMY

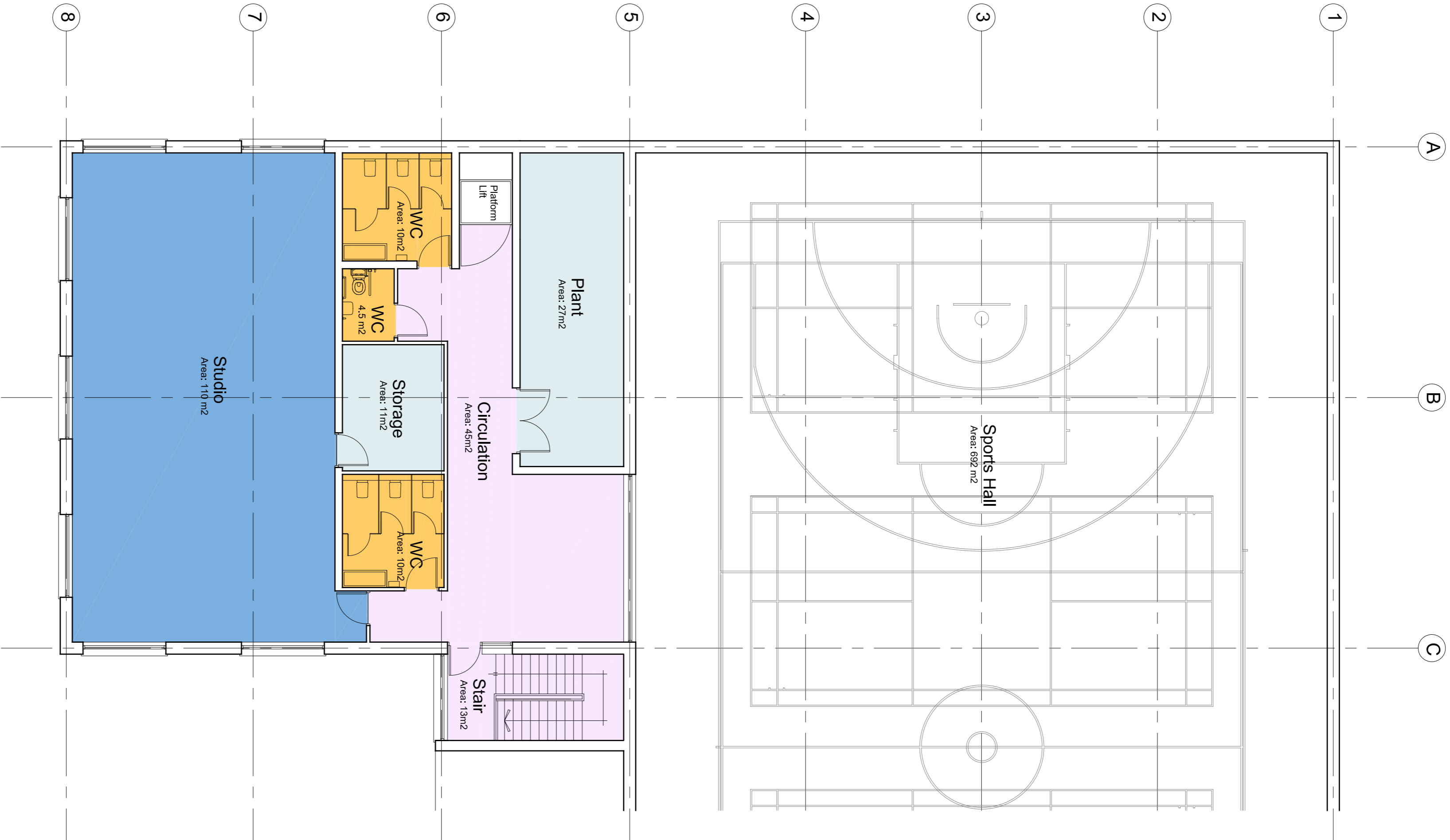
Title:
PROPOSED FLOOR PLANS

Drawn: LAK

Date: Sept 2023

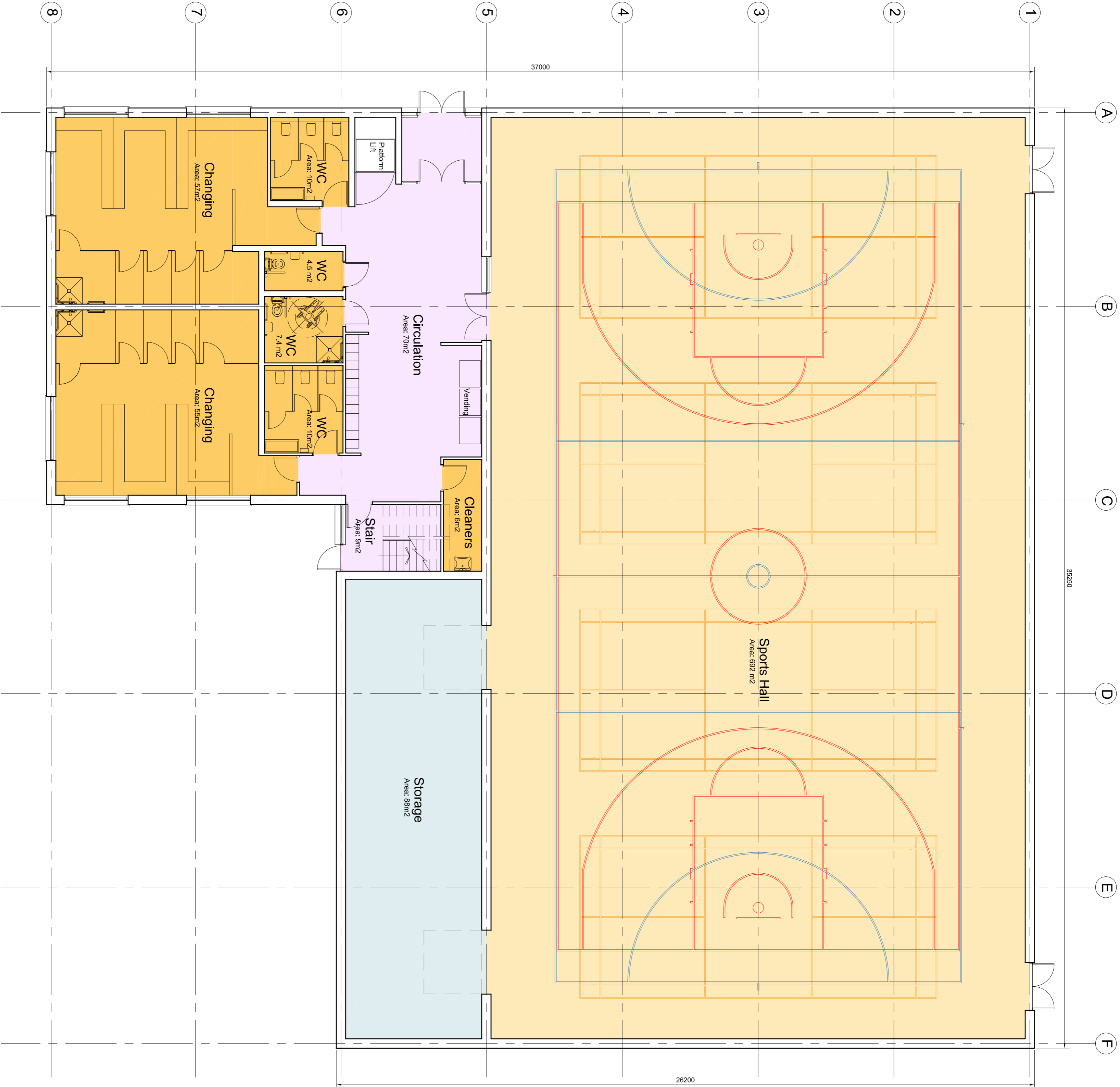
Scale: 1:100 @A1

Dwg No. P4576 PE5P SP P 003



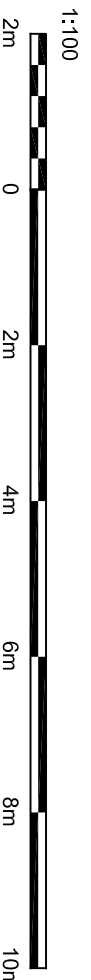
2 First Floor Plan

P03 Scale 1:100



1 Ground Floor Plan

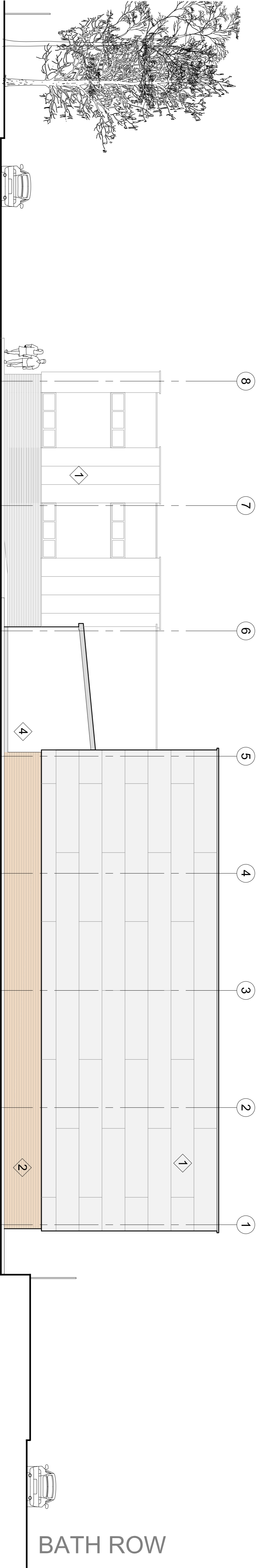
P03 Scale 1:100



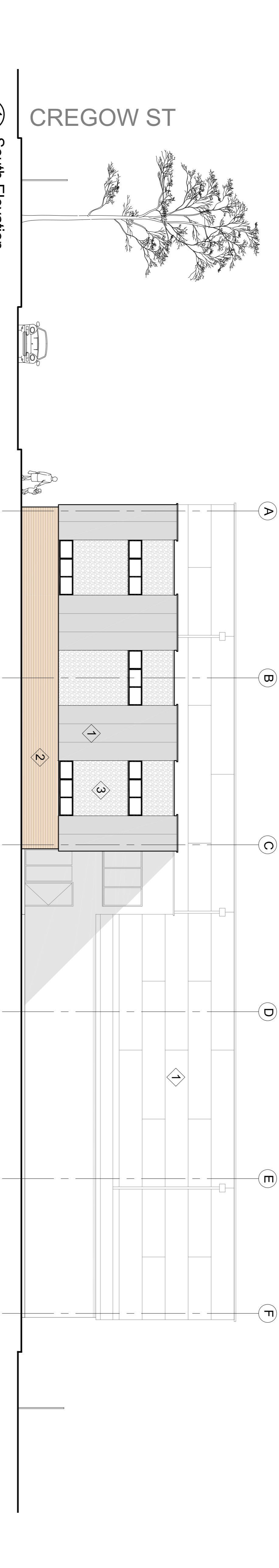
COPYRIGHT ©
FIGURED DIMENSIONS ONLY ARE TO BE USED. FOR OTHER DIMENSIONS REFER TO CA. ALL DIMENSIONS TO BE CHECKED ON SITE PRIOR TO THE COMMENCEMENT OF WORK. DRAWINGS AND BETWEEN DRAWINGS AND SPECIFICATION OR BILLS OF QUANTITIES TO BE REFERRED TO CA WITHOUT DELAY. DO NOT SCALE THIS DRAWING

Legend

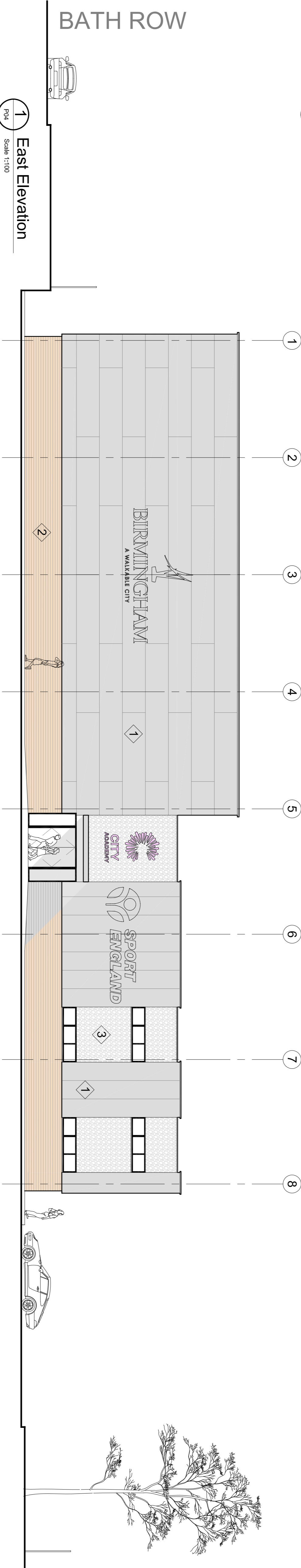
- 1 Composite insulated cladding panels, colour Anthracite.
- 2 Facing brickwork to match City Academy
- 3 Decorative stainless steel CNC cut panels.
- 4 Painted Powder.



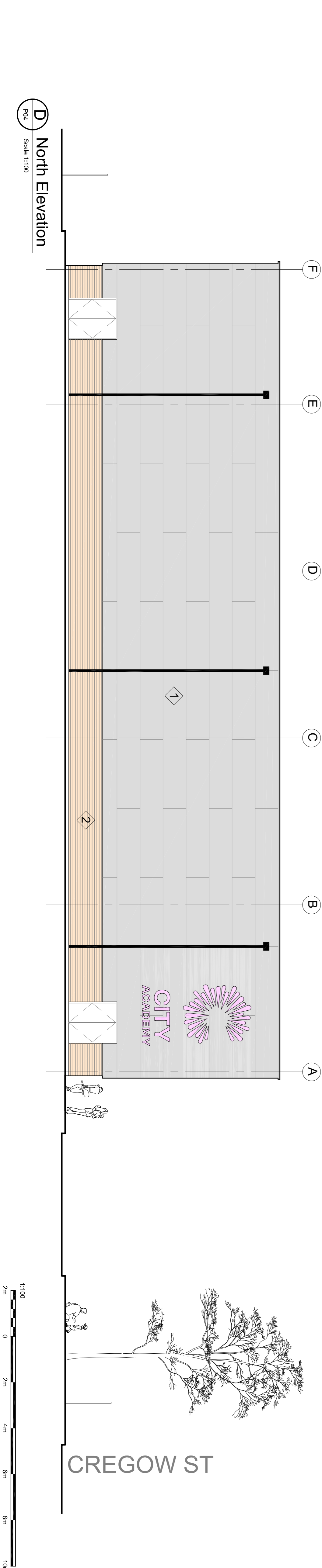
A West Elevation
P04 Scale 1:100



1 South Elevation
P01 Scale 1:100 - GMA - 54.2m2



1 East Elevation
P04 Scale 1:100



D North Elevation
P04 Scale 1:100

Revision	Date	Description	Drawn	Checked
ARCHITECTS LAYOUTS				

PinnacleESP
consulting engineers
Croydon Office:
No.1 Croydon, 1st Floor, 12-16 Addiscombe, Croydon,
CR0 0XT
London Office:
London Office, 1-2 Hatfield, London,
SE1 6JN
Tel: 020 8776 5500 | Fax: 020 8776 5533
Email: info@pinnacle-esp.co.uk | Web: www.pinnacle-esp.co.uk

Project:
CITY ACADEMY LANGLEY WALK

Client:
CITY ACADEMY

Title:
PROPOSED ELEVATIONS

Drawn: LAK
Date: Sept 2023
Scale: 1:100 @A1
Dwg No. P4576 PE5P SP P 004

Revision: 0

COPYRIGHT ©
FIGURED DIMENSIONS ONLY ARE TO BE USED, FOR OTHER DIMENSIONS REFER TO CA. ALL DIMENSIONS TO BE CHECKED ON SITE PRIOR TO THE COMMENCEMENT OF WORK. DIMENSIONS ARE TO FACE UNLESS OTHERWISE SPECIFIED. DRAWINGS AND BETWEEN DRAWINGS AND SPECIFICATION OR BILLS OF QUANTITIES TO BE REFERRED TO CA WITHOUT DELAY. DO NOT SCALE THIS DRAWING



Revision	Date	Description	Drawn, Checked
ARCHITECTS LAYOUTS			

PinnacleESP
consulting engineers
Croydon Office:
No.1 Croydon, 1st Floor, 12-16 Addiscombe, Croydon,
CR0 0XT
London Office:
SE10 0NS, 1-2 Hatfield, London,
SE10 0NS
Tel: 020 8776 5500 | **Fax:** 020 8776 5533
Email: info@pinnacle-esp.co.uk | **Web:** www.pinnacle-esp.co.uk

Project:
CITY ACADEMY LANGLEY WALK

Client:
CITY ACADEMY

Title:
ILLUSTRATIONS

Revision: 0

Drawn: LAK
Date: Sept 2023
Scale: NTS @A1
Dwg No. P4576 PESP SP P 005

27539

Fenced External
Play Space

19506

